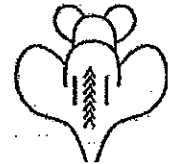


Body Condition Scoring (BCS) for Rats
Loyola University Chicago
Comparative Medicine

BC 1

Rat is emaciated

- Segmentation of vertebral column prominent
If not visible.
- Little or no flesh cover over dorsal pelvis. Pins prominent if not visible.
- Segmentation of caudal vertebrae prominent.



BC 2

Rat is under conditioned

- Segmentation of vertebral column prominent.
- Thin flesh cover over dorsal pelvis, little subcutaneous fat. Pins easily palpable.
- Thin flesh cover over caudal vertebrae, segmentation palpable with slight pressure.



BC 3

Rat is well conditioned

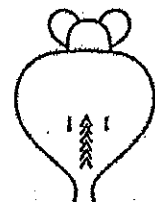
- Segmentation of vertebral column easily palpable.
- Moderate subcutaneous fat store over pelvis. Pins easily palpable with slight pressure.
- Moderate fat store around tail base. Caudal vertebrae may be palpable but not segmented.



BC 4

Rat is over conditioned

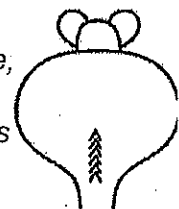
- Segmentation of vertebral column palpable with slight pressure.
- Thick subcutaneous fat store over dorsal pelvis. Pins of pelvis palpable with firm pressure.
- Thick fat store over tail base, caudal vertebrae not palpable.



BC 5

Rat is obese

- Segmentation of vertebral column palpable with firm pressure, may be a continuous column.
- Thick subcutaneous fat store over dorsal pelvis. Pins of pelvis not palpable with firm pressure.
- Thick fat store over tail base, caudal vertebrae not palpable.



A "+" or a "-" can be added to the body condition score
If additional increments are necessary (i.e. 2+, 2, 2-)